



**Product Code 936003**  
**ALLDRY WALL N ROOF 10**  
Waterproof Coating

Alldry Wall n Roof 10 is an elastomeric coating that provides excellent waterproofing properties, high durability, and resistance to water penetration for exterior wall & terrace surfaces. The elastic crosslinking mechanism of the polymer along with the acrylic fibers gives additional reinforcement to the film.

## PRODUCT BENEFITS#



### WATERPROOFING

Safeguards against Positive hydrostatic pressure of upto 10 Bar.



### CRACK BRIDGING

Highly Elastomeric coating provides Crack bridging of upto 2 mm.



### TEMPERATURE REDUCTION

Provides Excellent Surface Temperature reduction up to 10° C



### WARRANTY

10 years warranty against ingress of water through Terrace



### WARRANTY

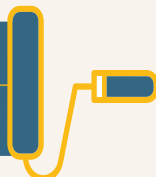
11 years Waterproofing Warranty (Upto 11 years Waterproofing warranty on Exterior Walls. The warranty on exterior walls will be applicable depending on the Birla Opus Exterior Topcoat used.)

## PRODUCT DETAILS

### ESTIMATED FORCED COVERAGE

Exterior Walls: 2.32sq.m/L (25 sq.ft/L) for 2 coats  
Re-painting 2.79 sq.m/L (30 sq.ft/L) for 2 coats

Horizontal (terrace, chajjas etc.):  
0.93 sq.m/L (10 sq.ft/L) for 3 coats or Parapet Walls on Terrace 2.79 - 3.25 sq.m/L (30-35 sq.ft/L) for 2coats



**Recommended usage** – To be applied on RCC or plaster using brush or roller. It can be used on building roofs, terraces, parapet, sunshades and exterior vertical walls. It can be also applied on IPS, sound brick bat coba or cementitious waterproofing.

### AVAILABLE PACKS



### COLOURS AVAILABLE

**WHITE**

### DRYING TIME TO TOUCH



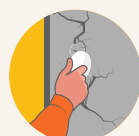
## PROCESS TO APPLY

### PRE-PAINTING STEPS/ SURFACE PREPARATION



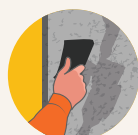
#### 1. Plaster

Ensure that the freshly plastered surface or new masonry surface is completely cured for at least 28 days.



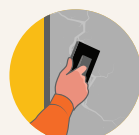
#### 3. Repairing

Check the substrate for any internal spalling, delamination or voids using sounding technique. Substrate defects and cracks (>5mm) if any should be repaired with Alldry Repair Master.



#### 2. Cleaning

Remove any plants or algae growing on terrace using wire brush or high-speed water jet to remove all the dirt, grease, loose paint or existing bitumen coating.



#### 4. Filling of cracks

Cracks (up to 5mm) at corner joints, channels and parapets should be filled with Alldry Crack Master Paste.

**The surface should be in Surface Saturated Dry (SSD) condition before application of coating.**

## ALLDRY WALL N ROOF 10

	STEP	% DILUTION	RECOATING PERIOD	ESTIMATED FORCED COVERAGE
<b>Horizontal Surface Application</b> (3 coats application with effective coverage 10 sq ft/L)	Self-Priming Coat	35% with potable water	4-6 hours	3 coats application with effective coverage 10 sq ft/L
	1 <sup>st</sup> Coat	Without Dilution	4-6 hours	
	2 <sup>nd</sup> Coat (Perpendicular to 1 <sup>st</sup> coat)	Without Dilution	4-6 hours	
<b>Vertical Surface Application</b> <b>Fresh Painting:</b> 2 coats application with effective coverage of 25 sq ft/L <b>Repainting:</b> 1 undiluted coat application with effective coverage 30-35 sq ft/L	Self-Priming Coat	35% with potable water	4-6 hours	Fresh Painting: 2 coats application with effective coverage of 25 sq ft/L  Repainting: 1 coat application with effective coverage 30-35 sq ft /
	1 <sup>st</sup> Coat	Without Dilution	4-6 hours	



## POST PAINTING CARE

Conduct ponding test by filling water up to 5 cm height for 24 hours after 7 days of air curing to ensure leak-free terrace.

## SAFETY ASPECTS

- Kindly refer to the MSDS, which gives detailed information on safety measures while handling the paint, which is available on request.
- Store the container with the lid tightly closed in an upright position, in a cool, dry place.
- Keep out of reach of children and away from eatables.
- May be harmful if swallowed. In case of ingestion, seek immediate medical attention.
- Wear eye protection during application. In case of contact with eyes or skin, rinse immediately with plenty of water and seek medical advice if irritation persists.
- No added Lead, Mercury, Chromium, Arsenic and other heavy metal compounds.
- Left-over paint/drums should not be disposed in soil or drains or water courses.

## PRECAUTIONS

- Do not apply when ambient temperature is less than 10°C or above 45°C
- Do not apply on wet or visibly damp surfaces or when humidity > 80%
- Do not apply if rain is expected within 48 hours after application.
- For surfaces having heavy algal infestation, cleaning with bleaching solution is advised.
- Ensure that the terrace surface has adequate slope to avoid water accumulation.
- All corners, gaps, joints, roof leak repair areas & outlets shall be coated with extra coat.
- Keep the material closed when not in use.
- Ensure end to end application on parapet walls along with terrace and inside drainage pipes upto 6 inches.
- Glass fibre mesh (45 gsm) is recommended at areas with high movements or irregular substrate or to bridge cracks, joints and seams on the substrate. It must be sandwiched between 1<sup>st</sup> and 2<sup>nd</sup> coat and placed on surface when 1<sup>st</sup> coat is still wet.
- The product is designed only for foot traffic and not vehicular or movement of machinery or equipment.

## TECHNICAL INFORMATION

Drying Time	4 to 6 hours
Appearance	Viscous liquid
Color	White
% Elongation	upto 250
Ponding Test	Passes
Crack Bridging Ability (mm)	Upto 2
Solar reflectance index	> 100
Resistance to Positive Hydrostatic pressure	Passes 10 bar
Shelf Life	36 months

Version No. WR002/08/2024. Kindly note that this datasheet supersedes all preceding versions. For further information, please visit [www.birlaopus.com](http://www.birlaopus.com) or call our customer care at 1800-120-1234 or email to [opuscare@adityabirla.com](mailto:opuscare@adityabirla.com).  
© Copyrighted content - all rights reserved.

## #TERMS & CONDITIONS

### **WATERPROOFING -**

Safeguards against Positive hydrostatic - pressure of upto 10 Bar - Based on Third Party Testing (as per test method - EN12390-8)

### **TEMPERATURE REDUCTION -**

Provides Excellent Surface Temperature reduction up to 10° C - Based on internal lab results (as per test method - ASTM D4803). Temperature recorded from 1 pm to 3 pm with the help of IR gun. Degree of surface temperature reduction will vary depending upon the surface & weather conditions.

### **WARRANTY -**

10 years waterproofing warranty against ingress of water through Terrace -  
Please refer to the product warranty document for further details

### **WARRANTY -**

11 years Waterproofing Warranty on Exterior Walls (Upto 11 years Waterproofing warranty on Exterior Walls. The warranty on exterior walls will be applicable depending on the Birla Opus Exterior Topcoat used.) -  
Please refer to the product warranty document for further details