



INTERIORS – N10

Solvent Thinnable Wall Primer

Birla Opus Prime N10 Interior Solvent Thinnable Wall Primer is an alkyd based solvent primer designed to offer outstanding adhesion and durability.

PRODUCT FEATURES



EXCELLENT OPACITY

Excellent opacity of paint which ensures flawless finish with fewer coats.



STRONG ADHESION

Exceptional adhesion to protect against cracking and peeling of paints.



EASY BRUSHABILITY

Smooth and seamless roller strokes are achieved with ease.



EXCELLENT WHITENESS

Infusing your walls with a radiant and crisp quality paint, enhancing their overall appearance.

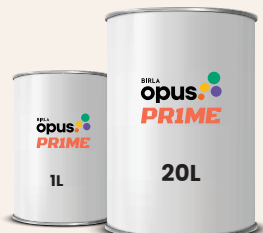


EXCELLENT FLOW & LEVELLING

Effortless application of paint for a uniform foundation giving a smooth topcoat finish.

PRODUCT DETAILS

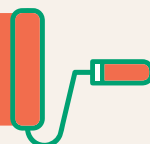
AVAILABLE PACKS



COVERAGE

Only on the correctly prepared surface using brush and roller:

180-200 sq.ft/L for 1 coat**



** Actual coverage may vary from the quoted coverage due to factors such as method and condition of application and surface roughness and porosity. One should ensure coverage is not higher than the one prescribed above for optimal performance.

COLOURS AVAILABLE



WHITE

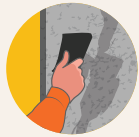
DIRECTION FOR USE

PRE PAINTING STEPS / SURFACE PREPARATION



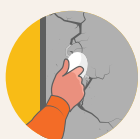
1. Plaster

New masonry surfaces must be allowed to cure completely for 28 days before painting. Ensure surface is free from any leakage, seepage, and efflorescence.



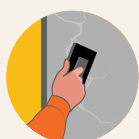
2. Cleaning

For repainting, remove loose paint, dust/dirt particles and laitance with sandpaper no. 180. Wipe clean. Algae or moss should be removed by wire brushing and water. In case of areas having excessive dampness use professional assistance to limit further dampness.



3. Filling of cracks

For filling cracks up to 5mm use Birla Opus crack fill solutions. For cracks above 5mm, it is recommended for cement: river sand (1:4 ratio) plastering. If the cracks are more, it is recommended to audit it with a structural engineer and get it repaired before painting.



4. Covering Holes and dents

In case of dents and holes use cement putty or a mix of white cement and fine sand in the ratio 1:3.

Special Instructions for Interior:

For Interior surfaces or substrates that are subjected to continuous seepage or dampness, please check the source of leakage or seepage and ensure the same is rectified before application.

PAINTING STEPS



1. Primer Application

Dilute 1 litre of Birla Opus Prime N10 Interiors Solvent Thinnable Wall Primer with 80-100ml of Mineral Turpentine Oil and apply one coat by brushing / rolling. Allow to dry for 6-8 hours.



2. Putty Application

Use Birla Opus One Acrylic putty to fill undulations of masonry surfaces. Ensure 4-6 hours of drying time. Apply second coat of putty if required. Sand the surface with emery paper no. 180, followed by no. 320



3. Primer Application

Dilute 1 litre of Birla Opus Prime N10 Interiors Solvent Thinnable Wall Primer with 80-100ml of Mineral Turpentine Oil and apply one coat by brushing / rolling. Allow to dry for 6-8 hours.



4. Topcoat Application

Apply suitable Birla Opus Prime Interior topcoat as per recommended procedure in the respective product data sheet.

For spray application, dilute 1 litre of Birla Opus Prime N10 Interiors Solvent Thinnable Wall Primer with 100-150ml of Mineral Turpentine Oil.

PRECAUTIONS

- Do not apply at relative humidity greater than 85%.
- Do not apply when ambient temperature is less than 10°C or above 40°C.
- For surfaces having heavy algal infestation, cleaning with bleaching solution is advised.
- Keep the material in closed condition when not in use.
- Ensure adequate ventilation under all application conditions.

SAFETY FEATURES

- Kindly refer to the MSDS, which gives detailed information on safety measures while handling the paint, which is available on request.
- Highly flammable product, do not store the product near electrical installations and flammable sources.
- Store the container with the lid tightly closed in an upright position, in a cool, dry place.
- Keep out of reach of children and away from eatables.
- May be harmful if swallowed. In case of ingestion, seek immediate medical attention.
- Wear eye protection during application. In case of contact with the eyes or skin, rinse immediately with plenty of water and seek medical advice if irritation persists.
- No added Lead, Mercury or Chromium compounds.
- Left-over paint/drums should not be disposed in soil or drains or water courses.

TECHNICAL DATA

Binder	Alkyd
Drying time	30 min surface dry*
Recoating time	6-8 hours*
Flash Point	Above 30 °C
Stability of thinned paint	To be used within 24 hours
Shelf Life	18 months

*May vary according to temperature & humidity



Enamels – N52

Premium Gloss Solvent Coating

Birla Opus Prime N52 Enamel Premium Gloss Solvent Coating is an IS 2932 compliant* synthetic enamel. It offers long-lasting gloss, making it an ideal choice for high-quality finishes.

PRODUCT FEATURES



IS 2932 COMPLIANT*

Adheres to the standards outlined by IS 2932.



OUTSTANDING GLOSS

Unmatched brilliance in gloss, providing a flawless finish that leaves a lasting impression.



EXCELLENT OPACITY

Ensures a flawless finish with fewer coats due to its excellent paint opacity.



ALKALI RESISTANT

Protects gloss against alkaline attacks.



EASY BRUSHABILITY

Effortless application which ensures smooth consistency and seamless coverage with every stroke.

PRODUCT DETAILS

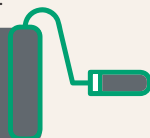
AVAILABLE PACKS



COVERAGE

Only on the correctly prepared surface using brush and roller:

180–200 sq. ft/L/ coat.
90–100 sq. ft/L for 2 coats.



**Actual coverage may vary from the quoted coverage due to factors such as method and condition of application and surface roughness and porosity. One should ensure coverage is not higher than the one prescribed above for optimal performance.

COLOUR AVAILABLE

7 Factory Made Shades



FINISH



DIRECTION FOR USE

PRE PAINTING STEPS / SURFACE PREPARATION



Metals

De-grease with suitable solvent (if required). Sand with emery paper no. 180 to remove rust and loose particles. Wipe clean.



Wood

Sand along the grains with emery paper no. 320 to make the surface smooth and uniform. Wipe clean.



Masonry

Remove loose paint, dust/dirt particles and sand with emery paper no. 180. Wipe clean.

PAINTING STEPS

1. Primer Application

Metals

Apply Birla Opus Calista Sparkle RO Primer by brushing as per the recommended application process. Ensure 6-8 hours of drying time. Sand the primer coat with emery paper no. 180. Wipe Clean.

Wood

Apply Birla Opus Calista Sparkle Wood primer – White/Pink as per the recommended application process. Ensure 10-12 hours of drying time. Sand the primer coat with emery paper no. 320. Wipe Clean.

Masonry

Apply Birla Opus Prime N10 Solvent Thinnable Wall Primer as per the recommended application process. Ensure 6-8 hours of drying time. Sand the primer coat with emery paper no. 180. Wipe Clean.

2. Filling of Cracks / Undulations

Metals: Use Birla Opus Knifing Paste Filler to fill undulations on metal substrates.

Wood and Masonry: Use Birla Opus One Acrylic Wall Putty to fill undulations of wooden / masonry surfaces. Ensure 4-6 hours of drying time and sand with emery paper no. 180, followed by emery paper no. 320.

After filling of crack / undulations as above, apply another coat of metal / wood primer / wall primer. Allow it to dry completely.

3. Application of Topcoat

Dilute 1 litre of Birla Opus Prime N52 Enamel Premium Gloss Solvent Coating with 80-100ml of Mineral Turpentine Oil and apply two coats by brushing. Allow 10-12 hours of drying between coats. For spray application, dilute 1 litre of Birla Opus Prime N52 Enamel Premium Gloss Solvent Coating with 150-200ml of Mineral Turpentine Oil.

PRECAUTIONS

- Do not apply at relative humidity greater than 85%.
- Do not apply when ambient temperature is less than 10°C or above 40°C.
- For surfaces having heavy algal infestation, cleaning with bleaching solution is advised.
- Keep the material in closed condition when not in use.
- Ensure adequate ventilation under all application conditions.

SAFETY FEATURES

- Kindly refer to the MSDS, which gives detailed information on safety measures while handling the paint, which is available on request.
- Highly flammable product, do not store the product near electrical installations and flammable sources.
- Store the container with the lid tightly closed in an upright position, in a cool, dry place
- Keep out of reach of children and away from eatables.
- May be harmful if swallowed. In case of ingestion, seek immediate medical attention.
- Wear eye protection during application. In case of contact with the eyes or skin, rinse immediately with plenty of water and seek medical advice if irritation persists.
- No added Lead, Mercury or Chromium compounds.
- Left-over paint/drums should not be disposed in soil or drains or water courses.

TECHNICAL DATA

Drying Time	Max 4 hours surface dry*
Drying time	Max 12 hours hard dry*
Drying Time	Max 24 hours tack free*
Gloss Level	Min 80 on 60° GH
Flash Point IS 101 / Part 1 Sec 6	More than 30 °C
Stability of thinned paint	To be used within 24 hours
Shelf Life	36 months

*May vary according to temperature & humidity



Enamels – N53

Premium Gloss Solvent Coating

Birla Opus Prime N53 Enamel Premium Gloss Solvent Coating is an IS 2933 compliant* synthetic enamel, delivering enduring brilliance and excellent opacity for a flawless, vibrant finish.

PRODUCT FEATURES



IS 2933 COMPLIANT*

Adheres to the standards outlined by IS 2933.



EXCELLENT GLOSS

Unmatched brilliance in gloss for flawless finish that leaves a lasting impression.



EXCELLENT OPACITY

Ensures a flawless finish with fewer coats due to its excellent paint opacity.



ALKALI RESISTANT

Protects gloss against alkaline attacks.



EASE OF APPLICATION

Effortless application which ensures smooth consistency and seamless coverage with every stroke.

PRODUCT DETAILS

AVAILABLE PACKS



COVERAGE

Only on the correctly prepared surface using brush and roller for –

180–200 sq. ft/L/coat**
90–100 sq. ft/L for 2 coats**



** Actual coverage may vary from the quoted coverage due to factors such as method and condition of application and surface roughness and porosity. One should ensure coverage is not higher than the one prescribed above for optimal performance.

COLOUR AVAILABLE

6 Factory Made Shades



FINISH



DIRECTION FOR USE

PRE PAINTING STEPS / SURFACE PREPARATION



Metals

De-grease with suitable solvent (if required). Sand with emery paper no. 180 to remove rust and loose particles. Wipe clean.



Wood

Sand along the grains with emery paper no. 320 to make the surface smooth and uniform. Wipe clean.



Masonry

Remove loose paint, dust/dirt particles and sand with emery paper no. 180. Wipe clean.

PAINTING STEPS

1. Primer Application

Metals

Apply Birla Opus Calista Sparkle RO Primer by brushing as per the recommended application process. Ensure 6-8 hours of drying time. Sand the primer coat with emery paper no. 180. Wipe Clean.

Wood

Apply Birla Opus Calista Sparkle Wood primer – White/Pink as per the recommended application process. Ensure 10-12 hours of drying time. Sand the primer coat with emery paper no. 320. Wipe Clean.

Masonry

Apply Birla Opus Prime N10 Solvent Thinnable Wall Primer as per the recommended application process. Ensure 6-8 hours of drying time. Sand the primer coat with emery paper no. 180. Wipe Clean.

2. Filling of Cracks / Undulations

Metals: Use Birla Opus Knifing Paste Filler to fill undulations on metal substrates.

Wood and Masonry: Use Birla Opus Acrylic Wall Putty to fill undulations of wooden / masonry surfaces. Ensure 4-6 hours of drying time and sand with emery paper no. 180, followed by no. 320.

After filling of crack / undulations as above, apply another coat of metal / wood primer / wall primer. Allow it to dry completely.

3. Application of Topcoat

Dilute 1 litre of Birla Opus Prime N53 Enamel Premium Gloss Solvent Coating with 80-100ml of Mineral Turpentine Oil and apply two coats by brushing. Allow 16-18 hours of drying between coats. For spray application, dilute 1 litre of Birla Opus Prime N53 Enamel Premium Gloss Solvent Coating with 150-200ml of Mineral Turpentine Oil.

PRECAUTIONS

- Do not apply when ambient temperature is less than 10°C or above 40°C.
- Do not apply at relative humidity greater than 85%.
- For surfaces having heavy algal infestation, cleaning with bleaching solution is advised.
- Keep the material closed when not in use.
- Ensure adequate ventilation under all application conditions.

SAFETY FEATURES

- Kindly refer to the MSDS, which gives detailed information on safety measures while handling the paint, which is available on request.
- Highly flammable product, do not store the product near electrical installations and flammable sources.
- Store the container with the lid tightly closed in an upright position, in a cool, dry place.
- Keep out of reach of children and away from eatables.
- May be harmful if swallowed. In case of ingestion, seek immediate medical attention.
- Wear eye protection during application. In case of contact with the eyes or skin, rinse immediately with plenty of water and seek medical advice if irritation persists.
- No added Lead, Mercury or Chromium compounds.
- Left-over paint/drums should not be disposed in soil or drains or water courses.

TECHNICAL DATA

Drying Time	Max 8 hours surface dry*
Drying time	Max 18 hours hard dry*
Drying Time	Max 24 hours tack free*
Gloss Level	Min 80 on 60° GH
Flash Point IS 101 / Part 1 Sec 6	More than 30 °C
Stability of thinned paint	To be used within 24 hours
Shelf Life	36 months

*May vary according to temperature & humidity