

## WATERPROOFING - C2K+

### Premium Cementitious 2K Coating

Birla Opus Prime C2K+ is a two-component high performance acrylic cementitious, polymer modified elastomeric, waterproofing & protective coating. It is composed of high quality cement with properly graded sand, selected additives as one part & an acrylic emulsion as a binder in its second part. It is applied for protection & waterproofing of water retaining structures like swimming pools etc. It has strong bonding to the substrate & excellent resistance to hydrostatic pressure.

### PRODUCT FEATURES



#### POTABLE WATER SAFE\*

Product conforms to overall migration test specifications as per USFDA-175:300 conducted by CFTRI for intended use for contact with potable water.



#### EXCELLENT ELONGATION

Offers elongation up to 200% for vertical surfaces preventing cracks.



#### EXCEPTIONAL CRACK BRIDGING ABILITY

Highly elastomeric coating provides crack bridging of up to 2mm.



#### WARRANTY\*

Up to 10 years waterproofing warranty\*

\*T&C apply. For more details, please refer to the product warranty document.

### PRODUCT DETAILS

#### AVAILABLE PACKS

12kg



#### COVERAGE

Estimated forced coverage:

5.4 – 6.4 sq.ft/kg for 2 coats\*\*

\*\*Actual coverage may vary from the quoted coverage due to factors such as method and condition of application and surface roughness and porosity. One should ensure coverage is not higher than the one prescribed above for optimal performance.

#### COLOURS AVAILABLE

GREY

#### SHELF LIFE



12 months  
from the date  
of manufacture

### AREAS OF APPLICATION



Old & New Concrete, Plaster & Masonry surfaces that is subjected to damage due to moisture.



Sunken Areas - Swimming pools, reservoirs, water Tanks.



RCC Roof, Terraces, Lift pits & Basement walls.

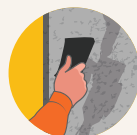


Wet Areas - Toilets, Bathrooms & Balconies

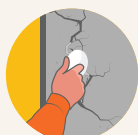
### SURFACE PREPARATION



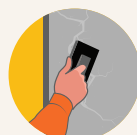
1. The surface under treatment must be strong and cleaned thoroughly for any loose particles or laitance etc. before application. Oil or grease on the surface must be removed by suitable degreasing agent and then washed out with jet water (about 160 bar water pressure). Any plumbing or sanitation work must be completed before taking up the application.



2. Any previously applied putty or POP must be removed before application. The surface must be cleaned to expose the plaster surface for application.



3. Any minor cracks must be filled with Birla Opus AllDry Crack Master Paste. For larger cracks or repairs, use Birla Opus repair solutions.



4. In case of efflorescence or loose plaster, expose the surface up to the brick level. Use Birla Opus AllDry Repair Master with mortar for replastering the surface.

## ANGLE FILLET/CORNER TREATMENT

- Moisten the RCC surface, apply a 1:1 bonding coat of Birla Opus AllDry Repair Master and Cement.
- Create a 50x50 mm angle fillet using PMM (1:5:15 ratio) with Birla Opus AllDry Repair Master, fresh cement, and graded quartz sand. Moist cure for 3-4 days.
- Apply a coat of Birla Opus Prime C2K+ followed by laying of 45 GSM glass fiber over angle fillet when the coating is still wet. Then apply the second coat to fully embed the glass fiber mesh, ensuring it's free from creases and air pockets.

## PIPE OUTLET/BORE PACKING TREATMENT

- Ensure gaps around PVC, GI pipes are packed with Birla Opus AllDry Repair Master.
- Fill the gap around the pipe penetration points with non-shrink grout. Apply a coat of Birla Opus Prime C2K+ waterproofing coating around the pipe penetration point. Ensure no gaps are left uncoated.

## MIXING & APPLICATION

- Birla Opus Prime C2K+ liquid component must be shaken thoroughly before mixing.
- In a mixing vessel, slowly add the powder component into the liquid (40 parts Liquid : 60 parts Powder)) with continuous stirring. In case of bulk volume, use mechanical mixer. Continue to stir until a homogenous, lump free mix is achieved. Allow the mix to stand for 3 - 5 mins to release entrapped air during mixing.
- Apply 1st coat of the mixed slurry using brush on SSD (saturated surface dry) surface. Make sure that the application is done correctly in areas where the surface shows minor abnormalities or undulations. Add an extra 1-2 feet of mixed slurry to all sides of the affected area.
- After 4 - 6 hours, apply 2nd coat in the direction perpendicular to the 1st coat.
- Leave the coating to air cure for 2 - 3 days. Then apply plaster or screed.
- Prepare 1:3 Screed mixture (50 kg of cement to be mixed 150 kg sand). Screed thickness should be a minimum of 15 mm to 30 mm. It needs 48 hrs of air curing followed by minimum 4 days of water curing.
- Apply 2 coats of Product on all over shower area. Sprinkle coarse quartz sand while second coat is still wet. This will provide better adhesion for subsequent tile adhesive materials.

## SAFETY ASPECTS

- Kindly refer to the MSDS for Birla Opus Prime C2K+ which gives detailed information on safety measures.
- Wear eye protection during application. In case of contact with eyes, rinse immediately with as mentioned above in "Mixing & Application" steps.
- In case of skin contact immediately wash skin with soap and plenty of water. Get medical attention if irritation develops or persists.
- Do not breathe vapour or spray. It is recommended to wear suitable nose pad during sanding and as mentioned above in "Mixing & Application" steps.
- No added Lead, Mercury or Chromium compounds.

## PRECAUTIONS & LIMITATIONS

- Always add powder to liquid. Do not add water into the mixture.
- Do not conduct ponding test till the coating is cured for 7 days.
- Ensure that the freshly plastered surface or new masonry surface is completely cured for at least 28 days. In case of replastering, plaster must be cured for at least 7 days.
- Application is not to be done in rainy/high humid (> 80% relative humidity) season or in extreme cold temperatures (less than 10°C) or if the temperature might drop to this level within 4 hours of application.
- Mixed product should be used within 4 hours of dilution. It is recommended to mix only the necessary amount and consume it fully.
- Ensure that terrace surface has adequate slope to avoid water accumulation.
- All corners, gaps, joints, roof leak repair area and outlets shall be coated with extra coat.
- Keep the material closed when not in use.
- The Product when applied on horizontal exterior surfaces need to be covered with screed. as mentioned above in "Mixing & Application" steps.

## TECHNICAL INFORMATION

Properties	Observations / Results	Specification
Mixing ratio (Liquid : Powder)	60:40	---
Surface dry time	50 mins	ASTM C 1640
Recoat time	4 - 6 hours	ASTM C 1640
Pot Life@27°C	30-40 mins	---
Dry Film Thickness	1 mm	ASTM D 1005
% Elongation at break	up to 200	ASTM D 2370
Tensile strength	1.03 N/mm <sup>2</sup>	ASTM D 2370
Positive Hydrostatic Pressure	up to 5 bar	EN12390-8
Negative Hydrostatic Pressure	up to 4 bar	ASTM D 7088
Crack Bridging ability	Upto 2 mm	EN 1062-7(A)
Pull off adhesion strength	Upto 1.2 mpa	ASTM D 7234
Food grade certification	POTABLE WATER SAFE*	(As per US FDA - 175.300)