



Product Code 918190

WATERPROOFING – B90

Ultra Luxury Waterproof Coating

Birla Opus Prime B90 Ultra Luxury Waterproof Coating is a specialized waterproofing formulation comprising of tough acrylic and PU hybrid polymers. The incorporation of a unique elastomeric structure, combined with acrylic fibres, enhances the film's strength and provides cooler exterior surfaces.

PRODUCT FEATURES



HYDROSTATIC PRESSURE

Safeguards against positive hydrostatic pressure of up to **12 Bar*** thus preventing water penetration into the film.



EXCELLENT CRACK BRIDGING ABILITY

Highly elastomeric coating provides crack bridging of upto 3 mm*.



SURFACE TEMPERATURE REDUCTION

Provides excellent surface temperature reduction up to **12° C***.



ANTI – CARBONATION

Coating acts as an effective barrier against carbon dioxide thus protecting the rebars against corrosion.



WARRANTY*

Up to 14-year waterproofing system warranty on vertical and 12 years on horizontal applications.

*T&C apply. For more details, please refer to the product warranty document.

PRODUCT DETAILS

AVAILABLE PACKS



COVERAGE

For Horizontal Surfaces –
10 sq.ft./L for 3 coats**

For Vertical Surfaces –
Fresh Painting – 42 sq.ft./L for 2 coats**
Repainting – 42 sq.ft./L for 1 coat**

**Actual coverage may vary from the quoted coverage due to factors such as method and condition of application and surface roughness and porosity. One should ensure coverage is not higher than the one prescribed above for optimal performance.

COLOURS AVAILABLE

WHITE

SHELF LIFE



36 months
from the date
of manufacture

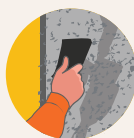
DIRECTIONS FOR USE

PRE PAINTING STEPS



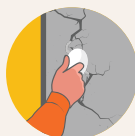
1. Plaster

It is essential to let new masonry surfaces fully cure. The suggested curing duration is 28 days, during which daily water curing is recommended for optimal results.



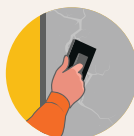
2. Cleaning

Ensure the surface is devoid of loose paint, dust, or grease. Eliminate any fungus, algae, or moss growth through wire brushing and water. In case of chalkiness on the underlying surface, perform water curing and subsequently apply a coat of Birla Opus Alldry Salt Seal prior to the topcoat application.



3. Crack filling

To fill cracks up to 5mm in width and 3mm in depth, use Birla Opus crack fill solutions. Bigger cracks, damaged or hollow portions, etc. must be repaired with a polymer-modified mortar.



4. Covering of holes and dents

For addressing small dents and holes, utilise cement wall putty or a blend of white cement and fine sand in a 1:3 ratio.

Special Instructions for Exterior If exterior surfaces face persistent seepage or dampness, investigate and arrest the source of leakage or seepage, let the surface dry and then apply Birla Opus Prime waterproof coatings. Ensure we provide slope to horizontal surfaces and proper drain to avoid any stagnant water accumulation.

*Based on lab tests



ADITYA BIRLA

PAINTS

PAINTING APPLICATION PROCESS



1. Surface Preparation

Newly plastered surfaces must undergo complete curing. Ensure thorough filling of any spot with putty, crack filler, etc. and achieve a uniform surface across the entire wall.



2. Waterproof Coating Application

Dilute 1 litre of B90 Exterior Waterproof Coating with 300-350 ml of water and apply one coat. Allow it to dry for 4-6 hours. Apply another coat of undiluted B90 Exterior Waterproof Coating and dry for 4-6 hours.



3. Topcoat Application

Horizontal Surfaces: Apply additional coat of undiluted B90 Waterproof Coating in perpendicular direction. Allow it to dry for 4-6 hours. **Vertical Surfaces:** Apply Texture (optional) and 2-3 coats of Birla Opus Prime Exterior topcoat with a gap of 4-6 hours after each coat.

Repainting Application

For Both Vertical and Horizontal Surface – Apply one undiluted coat on the treated surface. In case of smooth surface plaster, apply 1 coat with 33% dilution and another undiluted coat to achieve forced coverage

POST PAINTING CARE

1

For the best paint performance, regularly wash and clean surfaces to remove dust, stagnant materials, and any algae or fungus growth, preferably every six months.

2

Thoroughly clean horizontal surfaces to enhance durability.

3

Ensure there is no stagnant water at any point on any surface.

PRECAUTIONS

- For extremely rough surfaces: Application by brush is recommended to ensure all the grooves are covered well.
- Coating will not cover existing cracks, proper care to be taken to ensure the cracks are filled first and then coating is applied.
- The surface should be in Surface Saturated Dry (SSD) before application of coating.
- Do not apply when the ambient temperature is less than 10°C or above 45°C or if the temperature might drop to this level within 4 hours of application.
- For surfaces with heavy algal infestation, proper cleaning is mandated. If a bleaching solution is used to disinfect the algae, ensure proper cleaning of the bleaching solution with water.

SAFETY ASPECTS

- For detailed safety instructions on paint handling, refer to the Material Safety Data Sheet (MSDS) which is available upon request.
- The container should be stored in upright position in a cool and dry place which is shaded from sunlight. Ensure the lid is tightly closed when not in use.
- Avoid contact with food items and keep away from children.
- Caution : Swallowing may cause harm. Seek immediate medical attention if it occurs.
- Use eye protection while applying. If eye contact occurs, rinse thoroughly and seek medical guidance.
- If skin comes into contact, wash immediately with soap and abundant water. If irritation persists, seek medical attention.
- Avoid inhaling vapor or spray. Use a nose pad during sanding and surface preparation to avoid dust exposure.
- Dispose off unused paint responsibly. Avoid pouring it into drains or water bodies.
- If spill occurs, use sand or soil to contain it.
- No added lead, mercury or chromium compounds.

TECHNICAL INFORMATION

Appearance	Viscous liquid
Color	White
Tensile strength	Upto 3.2 mpa
Crack Bridging Ability	Upto 3 mm
Solar reflectance index*	Greater than 100
% Elongation	Upto 300
Resistance to Positive hydrostatic pressure	Passes upto 12 bar on horizontal application and 7 bar on vertical application
Specific Gravity	1.15 +- 0.04 g/cc
Solids by wt. %.	50-56

*Surface temperature reduction: Temperature recorded from 1 pm to 3 pm with the help of IR gun. Degree of surface temperature reduction will vary depending upon the surface & weather conditions.

Version No. B90-1002/05/2024 For more details, kindly contact customer care at 18001201234 or visit www.birlaopusprime.com. Kindly note that this datasheet supersedes all preceding versions.

© Copyrighted content -all rights reserved